



## Séries BST & BCS – Sapata com Haste Côncava

### Especificações:

- Material: Nylon
- Cor: Natural

### Características:

- Utilizado para proteger contato com superfícies.
- Ideal para chapas de metal, madeiras e tubos.



#### Haste Tipo



Flecha: A



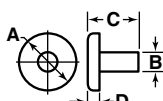
Plano: N



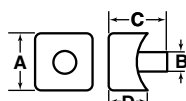
Cônico: T



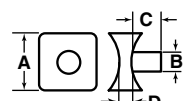
Degrau: S



Tipo 1



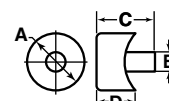
Tipo 2



Tipo 3



Tipo 4



Tipo 5

Código	Tipo	A (Tamanho Base)		B		C		D		Embalagem
		Pol	mm	Pol	mm	Pol	mm	Pol	mm	
BST015A	1A	0.437	11.1	0.125	3.18	0.546	13.87	0.125	3.18	29000
BST027A	1A	0.500	12.70	0.200	5.08	0.607	15.42	0.063	1.6	20000
BST005A	1N	0.362	9.19	0.200	5.08	0.250	6.35	0.150	3.81	16000
BST025A	1N	0.500	12.70	0.190	4.83	0.325	8.26	0.150	3.81	8000
BST010A	1S	0.375	9.53	0.187	4.75	0.600	15.24	0.300	7.62	15000
BST020A	1S	0.500	12.70	0.187	4.75	0.781	19.84	0.296	7.52	8000
BST030A	1S	0.500	12.70	0.250	6.35	0.640	16.26	0.188	4.78	5000
BST040A	1S	0.500	12.70	0.335	8.51	0.858	21.79	0.435	11.05	6500
BST072A	1S	0.750	19.05	0.255	6.48	0.400	10.16	0.187	4.75	7000
BST100A	1S	1.125	28.58	0.320	8.13	0.495	12.57	0.165	4.19	5000
BST140A	1S	1.250	31.75	0.375	9.53	0.840	21.37	0.380	9.65	2300
BST075C	1T	0.750	19.05	0.250	6.35	0.687	17.45	0.187	4.75	10000
BST095A	1T	1.000	25.40	0.250	6.35	0.656	16.66	0.156	3.96	7000
BST115A	2S	.750 x 1.00	19.05 x 25.40	0.250	6.35	0.570	14.48	0.120	3.05	5500
BST105B	2T	.625 x .750	15.08 x 19.05	0.250	6.35	0.546	13.87	0.203	5.16	5500
BST110A	3S	.750 x .750	19.05 x 19.05	0.268	6.81	0.490	12.45	0.090	2.28	5000
BST135A	3S	0.620 X 0.620	15.75 X 15.75	0.250	6.35	0.450	11.43	0.128	3.05	5500
BST012A	4N	0.375	9.53	0.260	6.6	0.880	22.35	0.635	16.13	10000
BCS030A	5S	0.750	19.05	0.255	6.48	0.360	9.14	0.187	4.75	800
BST070A	5S	0.980	24.89	0.250	6.35	.750	19.05	0.500	12.7	3500
BST150A	5T	0.750	19.05	0.268	6.81	0.710	18.03	0.187	4.75	8000