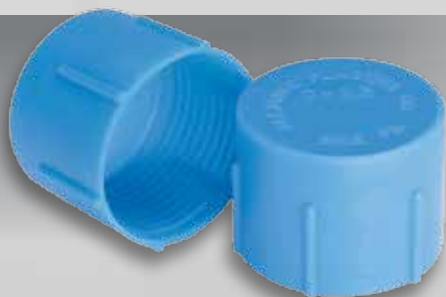




Série G – Caps para Conexões Roscadas UNF/JIC Acampanadas ou Não

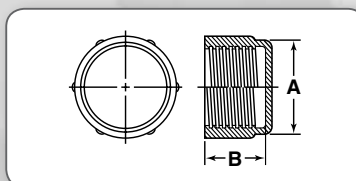


Especificações:

- Material: Polietileno de baixa densidade
- Cor: Azul

Características:

- Cap roscado com ranhuras externas para fácil montagem.
- Protege as conexões contra sujeira, amassados e umidade.



Código	Tamanho da Rosca UNF/JIC	Tamanho do Tubo Pol	JIC	Pol	A		B		Qde. Caixa
					mm	Pol	mm	Pol	
G1A	3/8"-24	3/16	3	0.437	11.11	0.469	11.91	15000	
G2A	7/16"-20	1/4	4	0.500	12.70	0.500	12.70	10000	
G3A	7/16"-24	1/4	4	0.500	12.70	0.313	7.94	18000	
G4A	1/2"-20	5/16	5	0.563	14.29	0.313	7.94	13000	
G5A	1/2"-20	5/16	5	0.563	14.29	0.500	12.70	9000	
G6A	1/2"-26	—	—	0.563	14.29	0.500	12.70	8500	
G7A	1/2"-20	5/16	5	0.563	14.29	0.875	22.23	5000	
G8A	9/16"-18	3/8	6	0.625	15.88	0.500	12.70	6500	
G9A	5/8"-18	3/8	—	0.687	17.46	0.500	12.70	6000	
G11A	5/8"-18	3/8	—	0.687	17.46	0.563	14.29	5000	
G12A	5/8"-18	3/8	—	0.687	17.46	0.813	20.64	3500	
G13A	5/8"-24	—	—	0.687	17.46	0.375	9.53	8500	
G14A	3/4"-16	1/2	8	0.813	20.64	0.625	15.88	3500	
G15A	3/4"-18	—	—	0.813	20.64	0.906	23.02	2500	
G16A	3/4"-20	—	—	0.813	20.64	0.437	11.11	5000	
G17A	7/8"-14	5/8	10	0.937	23.81	0.719	18.26	2400	
G18A	7/8"-14	5/8	10	0.937	23.81	1.000	25.40	3500	
G19A	7/8"-18	—	—	0.937	23.81	0.437	11.11	3500	
G20A	7/8"-18	—	—	0.937	23.81	0.781	19.84	4500	
G21A	1"-14	—	—	1.063	26.99	0.781	19.84	3500	
G22A	1-1/16"-12	3/4	12	1.125	28.58	0.813	20.64	3000	
G23A	1-1/16"-14	3/4	—	1.125	28.58	0.813	20.64	3000	
G24A	1-1/16"-16	—	—	1.125	28.58	1.000	25.40	2500	
G25A	1-3/16"-12	7/8	14	1.250	31.75	0.937	23.81	2000	
G26A	1-1/4"-18	—	—	1.375	34.93	0.469	11.91	3500	
G27A	1-5/16"-12	1	16	1.375	34.93	0.875	22.23	2000	
G30A	1-5/8"-12	1-1/4	20	1.750	44.45	0.906	23.02	1200	